

Quincy QSG Gasends 225, 430, 580, 730 & 850

Parts Manual

This publication contains important safety information and should be made available to all personnel who operate and/or maintain this product. Carefully read this manual before attempting to operate or perform maintenance on this equipment.



Quincy Compressor[®]

True Blue ReliabilitySM

Manual No. 65065-AB

January 2003 Edition


Alphabetical Index

Gasend Groups:

(QSG 225) 4-5
(QSG 430) 6-9
(QSG 580/730/850) 10-13

SERIAL NUMBER IDENTIFICATION ORDERING REPLACEMENT PARTS

The serial number tag is located on the top flange of the unit frame.





SERIAL NO.	MODEL NO.
<input type="text"/>	<input type="text"/>
WHEN ORDERING PARTS INCLUDE ALL OF THE ABOVE NUMBERS	
	Quincy Compressor Division BAY MINETTE, ALABAMA
MADE IN U.S.A.	QUINCY P/N 1693-176

• **Ordering Replacement Parts**

Prompt service can be rendered on replacement part orders if the following information is given:

1. The serial number must be given when ordering replacement parts.
2. State the exact part number needed. **Do not order by index numbers**, as index numbers are repeated throughout this manual and if used for ordering parts will necessitate time consuming correspondence.
3. State the exact quantity needed.
4. State the preferred type of transportation.

All replacement parts are to be ordered through an authorized distributor. **Insist on Genuine Quincy Parts only!** Failure to do so may void your warranty.

 WARNING  <p>Guards must be fastened in place before starting the machine and never removed before disconnecting and locking out the main power supply.</p>	 DANGER  <p>Air in the piping from this equipment will cause severe injury or death if used for breathing air or food processing (If non-food grade fluid is used). Air used for these processes must meet OSHA 29CFR1910.134 or FDA 21CFR178.3570 standards.</p>
--	---

FLUID SPECIFICATIONS

Quincy Compressor® recommends that all Quincy Rotary Screw Compressors be filled with one of the following QuinSyn® Brand synthetic fluids:

★ QuinSyn PG™ ★

★ QuinSyn F® (food grade) ★

★ QuinSyn Plus™ ★

★ QuinSyn XP® ★

Synthetic fluids other than QuinSyn brand(s) may not be compatible with components used in a Quincy Compressor. If it is deemed necessary to convert a Quincy Compressor to a synthetic other than QuinSyn brand, please contact an authorized Quincy Compressor distributor. To locate your nearest distributor, contact Sales & Marketing in Quincy, Illinois:

Phone 217-222-7700, FAX 217-222-4138 or visit our website: <http://www.quincycompressor.com>.

The following information will be required by the distributor when changing compressor fluid:

MODEL QSG:(CIRCLE CONFIGURATION) _____ 225 430 580 730 850

SERIAL No. _____ FLUID ORIGINALLY USED: _____

FLUID NOW USED (IF CHANGED): _____ NEW FLUID TO BE USED: _____

Additional information regarding fluid specifications can be found in the Instruction Manual shipped with your unit.

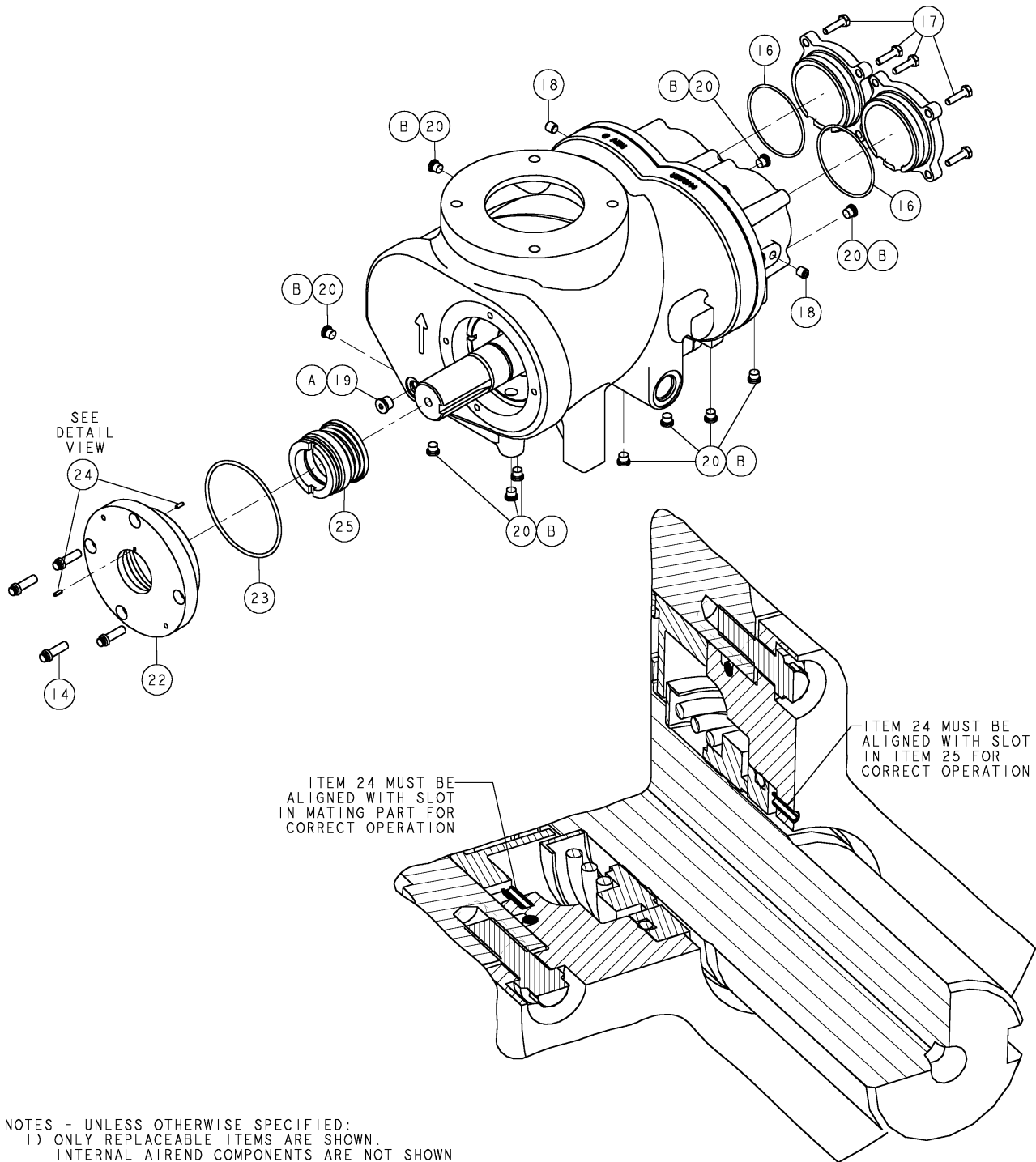
• **Fluid Analysis Kit**

Quincy Compressor offers free fluid analysis to provide early detection of excessive parts wear, fluid breakdown, or a contaminated fluid system. Order the Fluid Analysis Kit (part no. 128515) from your local authorized Quincy Compressor distributor.

All Quincy Rotary Screw Compressors are factory filled with QuinSyn PG unless otherwise specified.

GASEND GROUP (QSG 225)
145010-001

145010-TEC



NOTES - UNLESS OTHERWISE SPECIFIED:
 1) ONLY REPLACEABLE ITEMS ARE SHOWN.
 INTERNAL AIREND COMPONENTS ARE NOT SHOWN

GASEND GROUP (QSG 225)
145010-001

ITEM No.	QTY.	PART NUMBER	DESCRIPTION
1	*		HOUSING-ROTOR
2	2	124145-004	PIN-DOWEL
3	*		BEARING-ROTOR
4	1	145006	SPACER-SEAL ADAPTER
5	*		BEARING-ROTOR
6	1	125688	RETAINER-BEARING
7	*		ROTOR-MALE
8	*		ROTOR-FEMALE
9	1	125577-001	GASKET-DISCHARGE PLATE
10	1	129889	PLATE-DISCHARGE
11	9	90386-L14	SCREW-COUNTERBORE, 3/8-16 UNC X 1.25, GRADE 8 (@ 45 FT-LBS, BACK OFF TO 25 FT-LBS)
12	*		BEARING-ROTOR, DISCHARGE END
13	2	125572	RETAINER-BEARING
14	10	90386-K12	SCREW-COUNTERBORE, 5/16-18 UNC X 1.00, GRADE 8 (@ 13 FT-LBS)
15	2	125567	CAP-END, DISCHARGE
16	2	22749-151	O-RING, VITON
17	8	123478-J12	SCREW-CAP, 1/4-20 UNC X 1.00, GRADE 5 (@ 6 FT-LBS)
18	2	121160	PLUG-PIPE, 0.125 NPT
19	1	128883-050	PLUG-PIPE, 1/2-20, SAE O-RING
20	11	128883-038	PLUG-PIPE, 3/8-24, SAE O-RING
21	1	143019-2	SEAL-AIR
22	1	144950	ADAPTER-SEAL
23	1	22749-242	O-RING, VITON
24	2	110705-D04	PIN-ROLL, 0.125 X 0.38
25	1	22578-3	SEAL-SHAFT
26	**	125576	SHIM-DISCHARGE CAP, TEMPERED STEEL
27	**	125575	SHIM-ROTOR, TEMPERED STEEL

COMPONENT MAINTENANCE PARTS

A	1	140406-905	O-RING, VITON
B	11	140406-903	O-RING, VITON

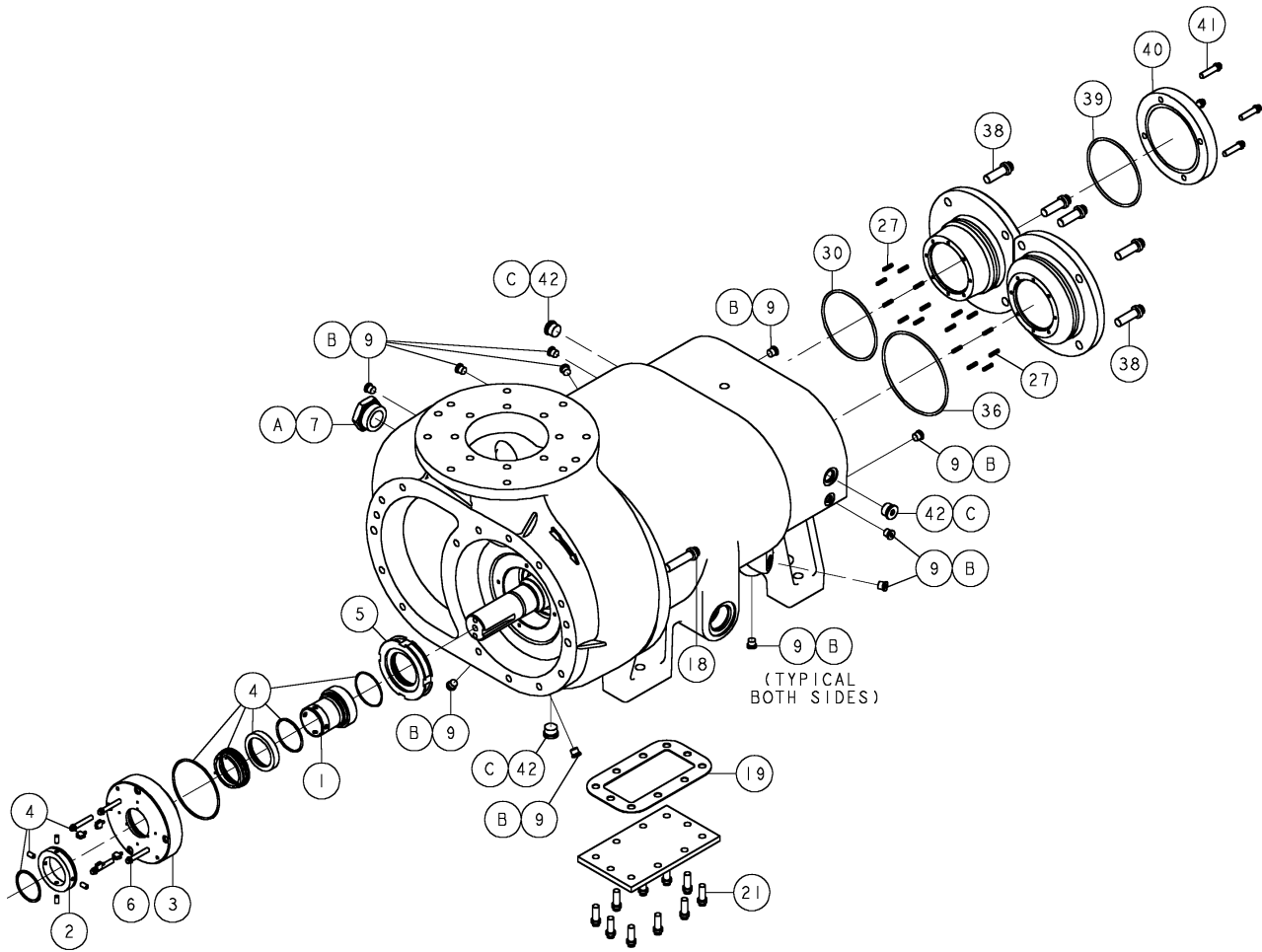
* Items not sold separately, must be ordered as a complete gasend.

** Quantity as required.

@ Indicates torque value in foot pounds (**lubricated threads**).

GASEND GROUP (QSG 430) 145124-HP1

145124-TEC



NOTES - UNLESS OTHERWISE SPECIFIED:
1) ONLY EXTERNAL, REPLACEABLE ITEMS ARE SHOWN,
INTERNAL AIREND COMPONENTS ARE NOT SHOWN.
2) NOT ALL REPLACEABLE ITEMS ARE SHOWN.

GASEND GROUP (QSG 430)
145124-HP1

ITEM No.	QTY.	PART NUMBER	DESCRIPTION
1	1	145083-1	SLEEVE-MECHANICAL SEAL
2	1	145084-1	COLLAR-MECHANICAL SEAL
3	1	145085-1	ADAPTER-MECHANICAL SEAL
4	1	145086-051	KIT-SHAFT SEAL
5	1	145077-1	BUFFER-MECHANICAL SEAL
6	4	90386-J15	SCREW-COUNTERBORE, 1/4-20 UNC X 1.50, GRADE 8 (@ 9 FT-LBS)
7	1	140106-016	FITTING-ADAPTER, 1-5/8-12 X 1.00 NPTF, SAE O-RING
8	*		CASING-INLET
9	12	128883-044	PLUG-PIPE, 7/16-20, SAE O-RING
10	2	124145-005	PIN-DOWEL
11	1	22749-457	O-RING, VITON
12	*		HOUSING-ROTOR
13	*		BEARING-ROTOR
14	2	128203-393	RING-RETAINER
15	*		ROTOR-MALE
16	*		ROTOR-FEMALE
17	1	126621-001	PLUG-PIPE, 0.125 NPT
18	10	90386-N17	SCREW-COUNTERBORE, 1/2-13 UNC X 2.00, GRADE 8 (@ 75 FT-LBS)
19	1	23548	GASKET-PLATE, FLUID GALLERY
20	1	23544	PLATE-FLUID GALLERY
21	10	90386-L12	SCREW-COUNTERBORE, 3/8-16 UNC X 1.00, GRADE 8 (@ 35 FT-LBS)
22	1		BEARING-ROTOR
23	1	129964-002	RING-RETAINER, BEARING
24	*		BEARING-ROTOR
25	*		BEARING-ROTOR

* Items not sold separately, must be ordered as a complete gasend.

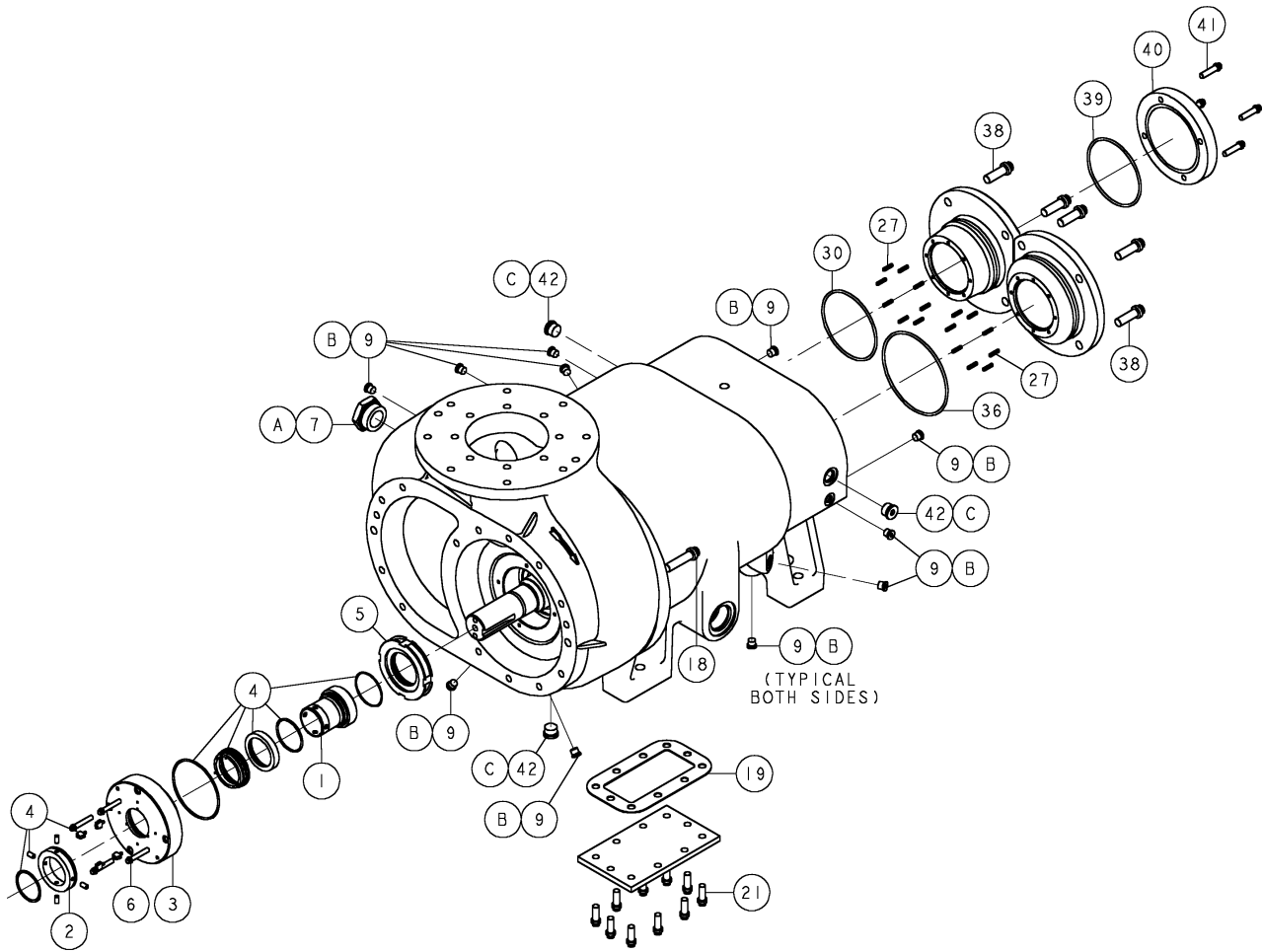
** Quantity as required.

@ Indicates torque value in foot pounds (**lubricated threads**).

Items 26 through 45 and the Component Maintenance Parts are on page 9.

GASEND GROUP (QSG 430)
145124-HP1

145124-TEC



NOTES - UNLESS OTHERWISE SPECIFIED:
 1) ONLY EXTERNAL, REPLACEABLE ITEMS ARE SHOWN,
 INTERNAL AIREND COMPONENTS ARE NOT SHOWN.
 2) NOT ALL REPLACEABLE ITEMS ARE SHOWN.

GASEND GROUP (QSG 430)
145124-HP1

ITEM No.	QTY.	PART NUMBER	DESCRIPTION
26	*		BEARING-ROTOR
27	16	144066	SPRING-COMPRESSION
28	1	141025	RETAINER-BEARING
29	3	90386-L21	SCREW-COUNTERBORE, 3/8-16 UNC X 3.00, GRADE 8 (@ 45 FT-LBS, BACK OFF TO 25 FT-LBS)
30	1	22749-245	O-RING, VITON
31	1	143920	ADAPTER-FLUID PUMP
32	**	140895	SHIM-ROTOR, TEMPERED STEEL/BRASS
33	**	129997	SHIM-ROTOR, TEMPERED STEEL/BRASS
34	1	143922	RETAINER-BEARING
35	3	90386-L14	SCREW-COUNTERBORE, 3/8-16 UNC X 1.25, GRADE 8 (@ 45 FT-LBS, BACK OFF TO 25 FT-LBS)
36	1	22749-252	O-RING, VITON
37	1	143950	CAP-END, DISCHARGE
38	8	90386-N15	SCREW-COUNTERBORE, 1/2-13 UNC X 1.50, GRADE 8 (@ 75 FT-LBS)
39	1	22749-244	O-RING, VITON
40	1	145121-1	PLATE-END, DISCHARGE
41	4	90386-K14	SCREW-COUNTERBORE, 5/16-18 UNC X 1.25, GRADE 8 (@ 13 FT-LBS)
42	3	128883-075	PLUG-PIPE, 3/4-16, SAE O-RING
43	3	126621-002	PLUG-PIPE, 0.125 NPT
44	1	126621-004	PLUG-PIPE, 0.25 NPT
45	1	121160	PLUG-PIPE, 0.125 NPT

COMPONENT MAINTENANCE PARTS

A	1	140406-920	O-RING, VITON
B	12	140406-904	O-RING, VITON
C	3	140406-908	O-RING, VITON

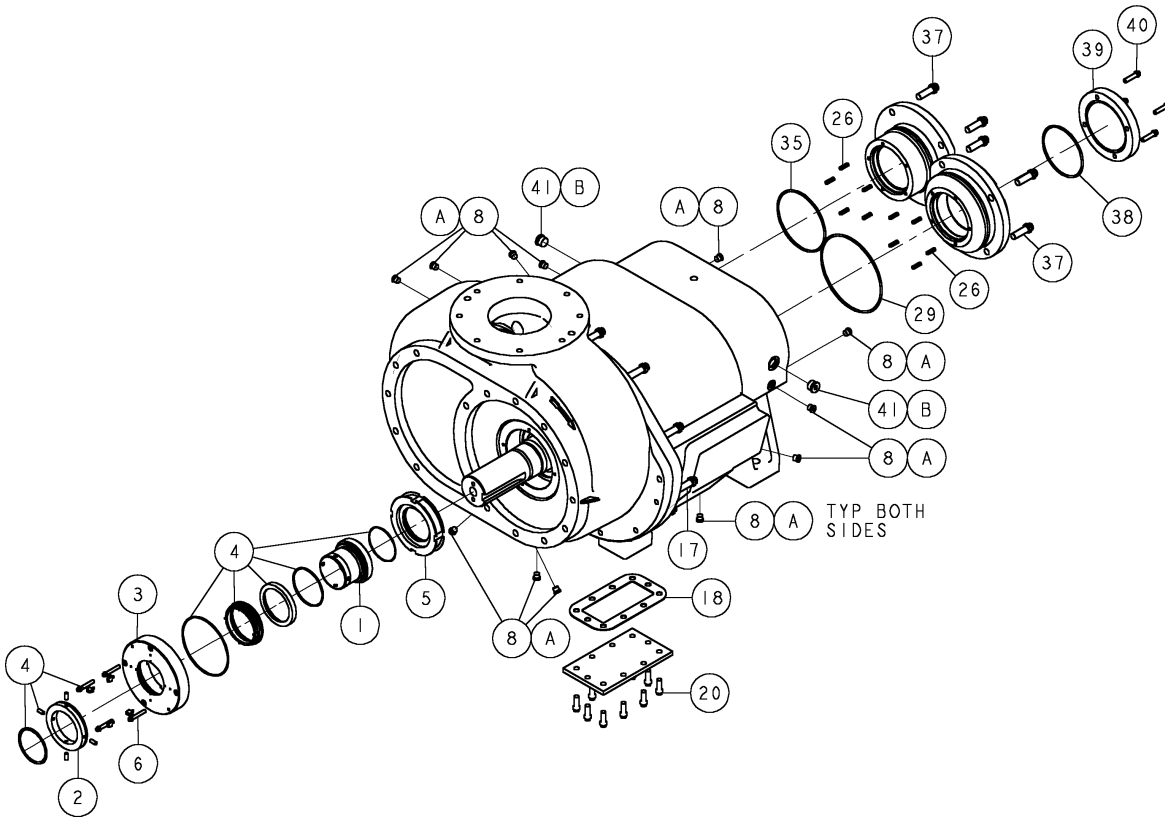
* Items not sold separately, must be ordered as a complete gasend.

** Quantity as required.

@ Indicates torque value in foot pounds (**lubricated threads**).

GASEND GROUPS (QSG 580/730/850)

145125-TEC



GASEND GROUPS (QSG 580/730/850)

ITEM No.	QTY.	PART NUMBER	DESCRIPTION
1	1	145083-2	SLEEVE-MECHANICAL SEAL
2	1	145084-2	COLLAR-MECHANICAL SEAL
3	1	145085-2	ADAPTER-MECHANICAL SEAL
4	1	145086-052	KIT-SHAFT SEAL
5	1	145077-2	BUFFER-MECHANICAL SEAL
6	4	90386-J15	SCREW-COUNTERBORE, 1/4-20 UNC X 1.50, GRADE 8 (@ 9 FT-LBS)
7	*		CASING-INLET
8	13	128883-044	PLUG-PIPE, 7/16-20, SAE O-RING
9	2	124145-005	PIN-DOWEL
10	1	22749-466	O-RING, VITON
11	*		HOUSING-ROTOR
12	*		BEARING-ROTOR
13	2	128203-500	RING-RETAINER, BEARING
14	*		ROTOR-MALE
15	*		ROTOR-FEMALE
16	1	126621-001	PLUG-PIPE, 0.125 NPT
17	12	90386-N17	SCREW-COUNTERBORE, 1/2-13 UNC X 2.00, GRADE 8 (@ 75 FT-LBS)
18	1	23218	GASKET-PLATE, FLUID GALLERY (QSG 580)
	1	23204	GASKET-PLATE, FLUID GALLERY (QSG 730 & 850)
19	1	23217	PLATE-COVER, FLUID GALLERY (QSG 580)
	1	23203	PLATE-COVER, FLUID GALLERY (QSG 730 & 850)
20	11	90386-L12	SCREW-COUNTERBORE, 3/8-16 UNC X 1.00, GRADE 8 (@ 35 FT-LBS)
21	*		BEARING-ROTOR
22	1	124530	RING-RETAINER, BEARING
23	*		BEARING-ROTOR
24	*		BEARING-ROTOR
25	*		BEARING-ROTOR

* Items not sold separately, must be ordered as a complete gasend.

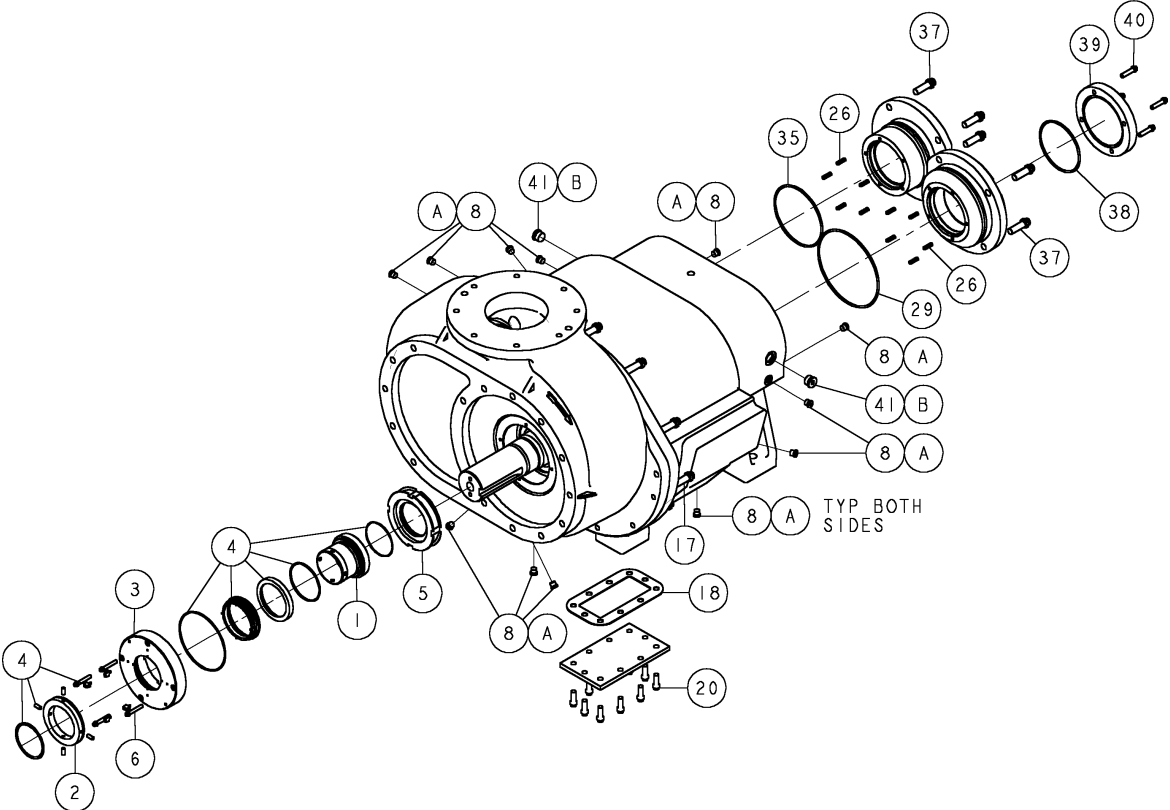
** Quantity as required.

@ Indicates torque value in foot pounds (**lubricated threads**).

Items 26 through 41 and the Component Maintenance Parts are on page 13.

GASEND GROUPS (QSG 580/730/850)

145125-TEC



GASEND GROUPS (QSG 580/730/850)

ITEM No.	QTY.	PART NUMBER	DESCRIPTION
26	10	129979	SPRING-COMPRESSION
27	1	129982	RETAINER-BEARING
28	4	90386-L18	SCREW-COUNTERBORE, 3/8-16 UNC X 2.25, GRADE 8 (@ 45 FT-LBS, BACK OFF TO 25 FT-LBS)
29	1	22749-259	O-RING, VITON
30	1	129981	ADAPTER-FLUID PUMP
31	**	140889	SHIM-ROTOR, TEMPERED STEEL & STAINLESS STEEL/BRASS
32	**	129995	SHIM-ROTOR, TEMPERED STEEL & STAINLESS STEEL/BRASS
33	1	129624	RETAINER-BEARING
34	4	90386-L14	SCREW-COUNTERBORE, 3/8-16 UNC X 1.25, GRADE 8 (@ 45 FT-LBS, BACK OFF TO 25 FT-LBS)
35	1	22749-251	O-RING, VITON
36	1	129980	CAP-END, DISCHARGE
37	8	90386-N15	SCREW-COUNTERBORE, 1/2-13 UNC X 1.50, GRADE 8 (@ 75 FT-LBS)
38	1	22749-244	O-RING, VITON
39	1	145121-1	PLATE-END, DISCHARGE
40	4	90386-K14	SCREW-COUNTERBORE, 5/16-18 UNC X 1.25, GRADE 8 (@ 13 FT-LBS)
41	2	128883-075	PLUG-PIPE, 3/4-16, SAE O-RING

COMPONENT MAINTENANCE PARTS

A	13	140406-904	O-RING, VITON
B	2	140406-908	O-RING, VITON

* Items not sold separately, must be ordered as a complete gasend.

** Quantity as required.

@ Indicates torque value in foot pounds (**lubricated threads**).

Quincy Service is always near.
There are authorized Quincy
Distributors located worldwide
that stock genuine Quincy parts
& accessories for a wide range of
Quincy products.

Quincy Service specialists are
factory trained and will help keep
you in business. Call for
Authorized Quincy Service.



Quincy Compressor[®]

True Blue ReliabilitySM



Rotary/Vacuum/Systems: 334.937.5900
Reciprocating/Systems: 217.222.7700
Nearest Distributor: 888.424.7729
E-mail: trueblue@quincycompressor.com
Discover: www.quincycompressor.com

EnPro
Industries

© 2003 Quincy Compressor, an **EnPro Industries** company
All Rights Reserved. Litho in U.S.A.